

[View this email in your browser](#)



VALIDATING DIAGNOSTICS TO
COMBAT ANTIMICROBIAL RESISTANCE
BY OPTIMISING ANTIBIOTIC USE

 WWW.VALUE-DX.EU

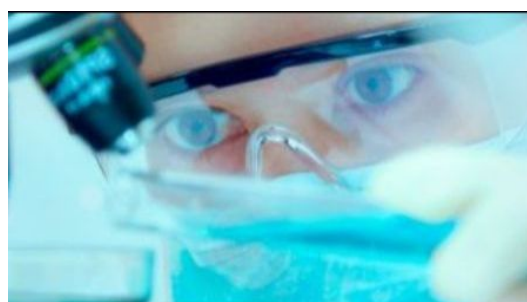
VALUE-Dx assesses diagnostic accuracy of point-of-care tests in community settings for lower CA-ARTI



WP1 successfully concluded a systematic review and meta-analysis to assess the diagnostic accuracy of point-of-care tests (POCTs) in community settings for lower community-acquired, acute respiratory tract infections (CA-ARTI). [Read more.](#)

VALUE-Dx developed sample collection and management manuals for trials

WP2 has been working on the set-up of the VALUE-Dx biobank and continuing the optimisation of the protocols in preparation for the imminent start of WP4 clinical trials. Thanks to the expertise of [LAB-Net](#) members, the sample collection and management manuals for both trials have been developed. [Read more.](#)



Federated Research Data Infrastructure in the fight against AMR



implemented a data management architecture capable for the storage, curation and reporting of the data generated within the VALUE-Dx project. [Read more.](#)

COVID-19 pandemic: the third PPAS has started!

The delivery of primary health care, especially for patients with symptoms of a respiratory tract infection, has been highly affected by the COVID-19 pandemic. The PPAS3, which started beginning of March 2021, will capture information on care delivery and patient management in 17 countries during hopefully the final stage of the COVID-19 pandemic. [Read more.](#)



An update on the ADEQUATE trial



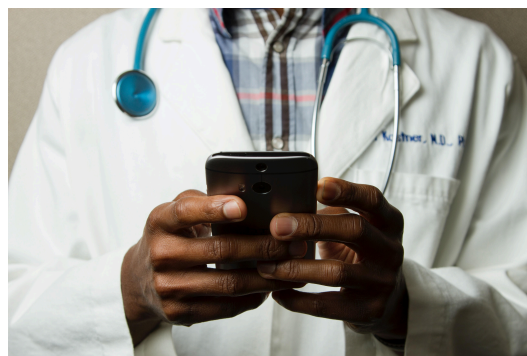
ADEQUATE aims to assess the impact of rapid syndromic diagnostic testing in patients with Acute Respiratory Tract Infection (ARTI) at the emergency department, on (1) hospital admission rates and (2) antimicrobial prescriptions (days of treatment) and the non-inferiority in terms of clinical outcome. During 2020, 8 adult sites and 6 pediatric sites have been selected, covering different geographical areas in

Israel, France, Belgium) in the context of [CLIN-Net](#) and [PENTA](#) networks. [Read more.](#)

PRUDENCE trial will start in the summer of 2021

The PRUDENCE Trial is currently being set up. This is a platform randomised controlled trial of point of care diagnostics for enhancing the quality of antibiotic prescribing for CA-ARTI in ambulatory care in Europe. Due to the pressures on primary care with the continuing COVID-19 pandemic, the vaccine roll-out and lack of flu circulating, the PRUDENCE trial has been postponed until September 2021.

[Read more.](#)



Funding models and health economics of diagnostics



WP5 is researching the funding models and health economics of diagnostics. What does exactly make these innovative diagnostics valuable and what are the barriers for healthcare providers and policy makers to start adopting them?

These questions can only be answered using an interdisciplinary approach across disciplines such as microbiology, sociology, epidemiology, and economics; but it is also vital to combine the views from governmental organisations, industry, and academics. [Read more.](#)

UPCOMING EVENTS

- [VALUE-Dx General Assembly, 30-31 August 2021, Royal Hotel Carlton in Bologna, Italy \(subject to change due to the COVID-19 pandemic\)](#)



Copyright © 2020 VALUE-Dx, All rights reserved.



This project has received funding from the Innovative Medicines Initiative 2 Joint Undertaking under grant agreement No 820755. This Joint Undertaking receives support from the European Union's Horizon 2020 research and innovation programme and EFPIA and bioMérieux SA, Janssen Pharmaceutica NV, Accelerate Diagnostics S.L., Abbott, Bio-Rad Laboratories, BD Switzerland Sàrl, and The Wellcome Trust Limited.

Our mailing address is:

value_dx@uantwerpen.be

Want to change how you receive these emails?

You can [update your preferences](#) or [unsubscribe from this list](#).

This email was sent to <<Email Address>>

[why did I get this?](#) [unsubscribe from this list](#) [update subscription preferences](#)

Organisation · Universiteitsplein · Wilrijk 2160 · Belgium